

Acoustic Wooden Panel (ESK 112)

This panel prevents the resonance caused by the collision of sound waves with variable frequencies in the existing space to the surface of the wall or ceiling and allows the sound to be heard clearly. It is produced from completely sustainable (recyclable) materials.

Panels produced from nature-friendly and harmless materials not only increase the sound quality of the space, but also their elegant design takes precedence over aesthetic concerns.

According to the colors it has, it can be preferred to use in any place.

Surface

Melamine, Natural Veneer, Engineered Veneer, Painted, Laminated

Fire Resistance Class

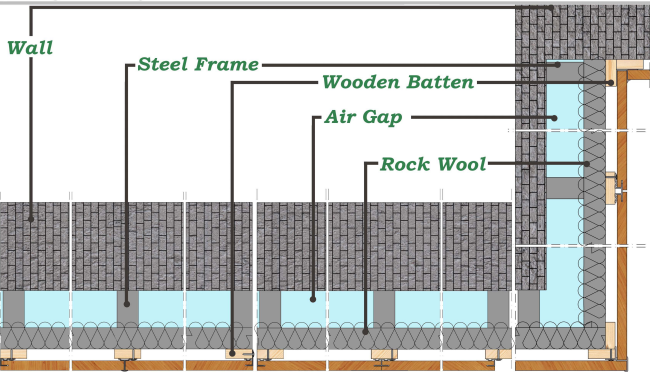
B s2 d0

Edge Details

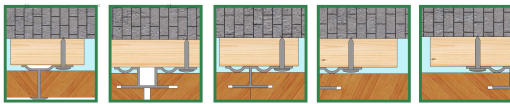
Tongue and Groove, Clips System, Biscuit, Omega Profile

Installation (Wall Panel)

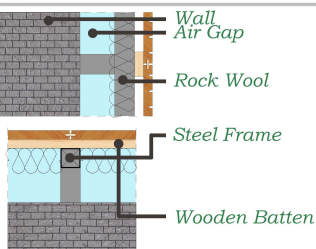
Omega Profile



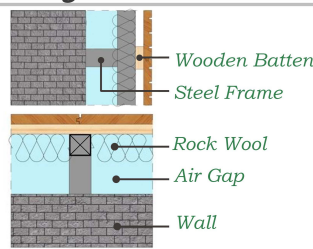
Omega profile can be used to install panels on the wall. Five different options are available. It is also possible to use this system in the installation of ceiling panels.



Biscuit



Tongue & Groove



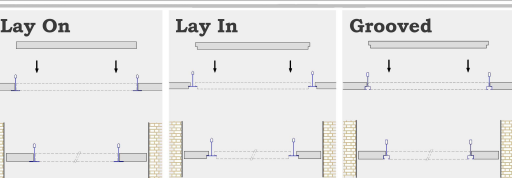
Installation (Ceiling)

For our ceiling panels, we have two different carrier systems such as classic and modern.

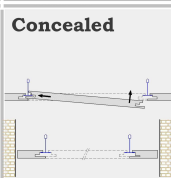
Corners



Classic



Modern



RAW Material

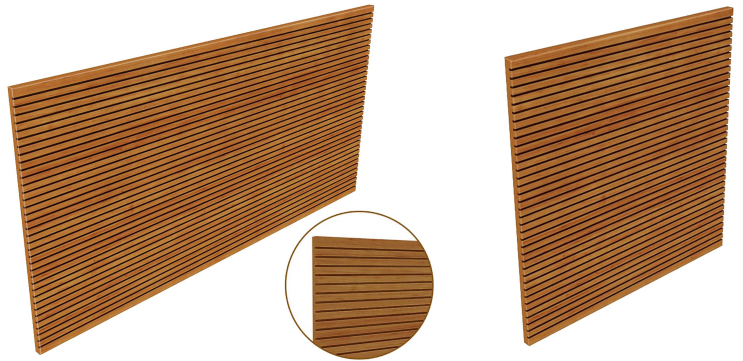
750 kg/m³ density MDF or Fire Reterdant MDF

DIMENTIONS (Ceiling)

Width	Lenght	Thickness
600 mm	600 mm	12 ,18 mm
517 mm	1380 mm	12 ,18 mm
600 mm	1200 mm	12 ,18 mm

DIMENTIONS (Wall)

Width	Lenght	Thickness
517 mm	1380 mm	12 ,18 mm
517 mm	2400 mm	12 ,18 mm
128 mm	2400 mm	12 ,18 mm
293 mm	2400 mm	12 ,18 mm
581 mm	1180 mm	12 ,18 mm
600 mm	1200 mm	12 ,18 mm



Front Side

Grooved
c/c Distance of Grooves: 16 mm

Groove Features

Groove Depth: 6 mm
Groove Width 2,3,4 mm

Back Side

Plain

Acoustic Features

It should be used with 5 cm tick, 50kg/m³ density glass wool or rock wool board.

Approximate Weight

11-12 km/m²

Board Size

2100 mm x 2800 mm or
1830 mm x 3660 mm

Ceiling Application

Panel can be used with T bars such as T24, T15, T24 concealed or with tongue and groove

