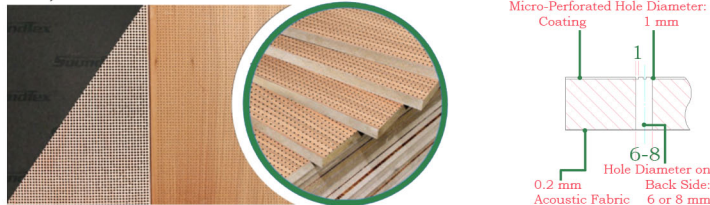


ESKmicro-perforated products are applied onto wood veneers and are only noticeable upon close inspection. They offer excellent sound absorption across a wide frequency range.

Since the perforation is applied directly onto the veneer and the hole diameter is as small as 1 mm, the perforations are almost invisible to the naked eye and are distributed uniformly across the entire surface.

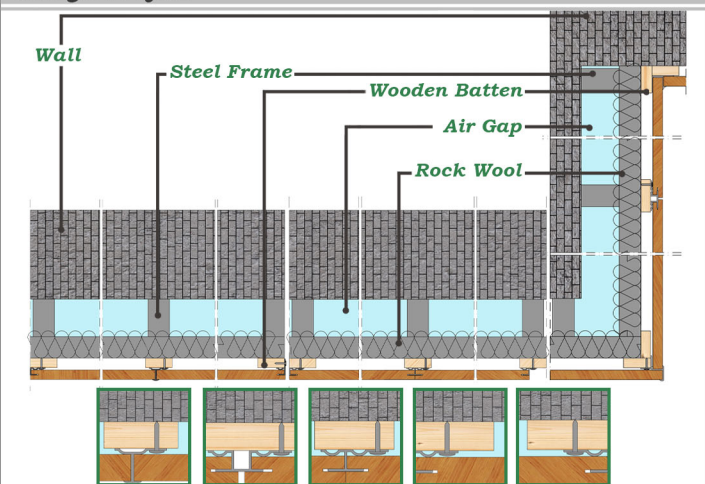
When enclosed spaces are clad with ESKmicro-perforated panels, advanced room acoustics are achieved. As a result, disturbing sounds from machinery, mechanical equipment, and similar sources are significantly reduced and absorbed.

Available perforation diameters include 0.5 mm, **1 mm**, 1.5 mm, 2 mm, and 3 mm.



### Installation Detail (Wall)

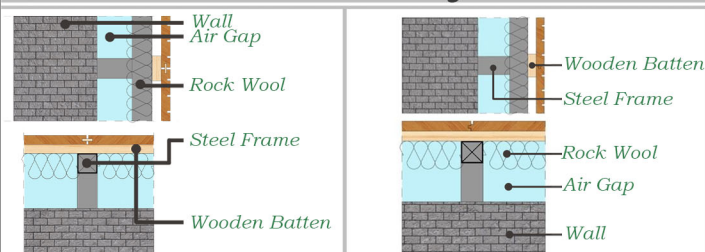
#### Omega Profile



The Omega profile is suitable for mounting wall panels and is offered in five different profile variants. This system can also be utilized for ceiling panel installations.

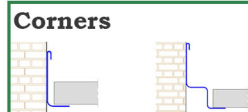
#### Biscuit

#### Tongue & Groove



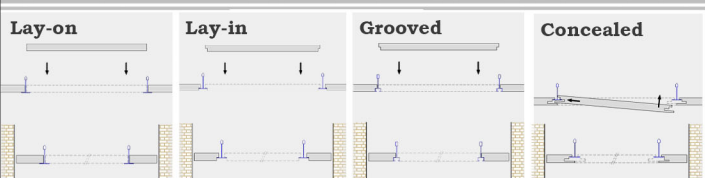
### Installation Detail (Ceiling)

Two different support systems are used for our ceiling panels: classic and modern.



#### Classic

#### Modern



### Edge Details

Tongue & Groove, Clip System, Biscuit, Omega Profile



### Core Material

750 kg/m<sup>3</sup> density MDF or fire-retardant MDF

### Surfaces

Natural Veneer, Engineered Veneer, Laminate Finish

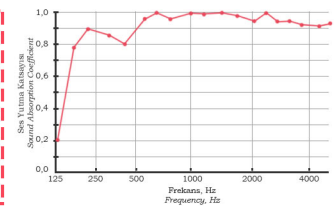
### DIMENSIONS

Width	Length	Thickness
<b>517 mm</b>	<b>1381 mm</b>	8, 12, <b>18 mm</b>
133 mm	2780 mm	8, 10, 18 mm
293 mm	2780 mm	8, 10, 18 mm
517 mm	2780 mm	8, 10, 18 mm
1029 mm	2780 mm	8, 10, 18 mm
581 mm	1180 mm	8, 10, 18 mm

Production in custom sizes is possible within the dimensional limitations of the core materials.

### Acoustic Performance

For optimal acoustic performance, the panel should be backed with 50 kg/m<sup>3</sup> density glass wool or stone wool, 50 mm thick.



Euro | NRC  
A | 0,92

- The distance between the perforations may vary. As a standard, the center-to-center spacing is either 2.5×2.5 mm or 5×5 mm.
- Depending on the spacing, the number of perforations per square meter can range from 32,000 to 300,000.
- The panels are aesthetically pleasing and easy to use.
- To ensure fire resistance, fire-retardant MDF panels with a B-s2,d0 rating can be supplied upon request. These panels can be finished in four different ways: natural veneer, engineered veneer, laminate finish, or lacquer paint. For natural veneered panels, a certified fire-retardant coating can optionally be applied.
- All boards are tested and certified in accordance with Euroclass EN 13501-1 standards.

### Back Surface

Perforation Density: 16,000 or 8,000 holes/m<sup>2</sup>

Center-to-Center Hole Spacing: 8x8 or 16x8 mm

Hole Diameter: 6 mm or 8 mm

### Raw Material Dimensions

2100 mm x 2800 mm or 1830 mm x 3660 mm

### Fire Resistance Class

B s2 d0

### Ceiling Carrier System Components

The panels can be supported by T-profiles including T24, T15, and T24 Concealed Carrier profiles, and are also compatible with tongue-and-groove joint systems.

