

# ESKmicro Perforation Wooden Panel (ESKmicro 1)

Technical Data Sheet

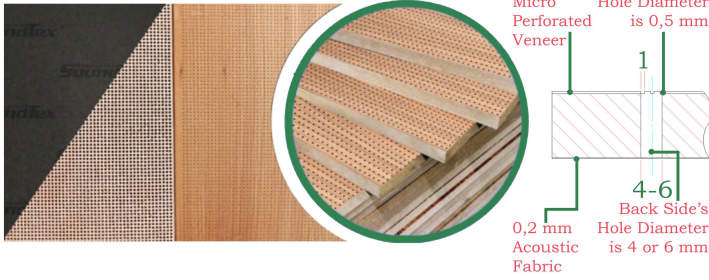
ESKmicro perforated products are applied to the wood veneer and can be recognizable only when seen closely. They have good sound absorption in a wide range of frequencies.

Since the perforation is applied to the coating and the hole diameters are 1 mm, it is produced in such a way that it is almost invisible and spreads over the entire surface.

When indoor spaces are covered with ESK micro perforated panels, advanced ambient acoustics are provided.

Therefore, it reduces and eliminates disturbing noises such as machinery and mechanical equipment in that place.

The hole diameter can be 0,5 mm, **1 mm**, 1,5 mm, 2 mm, 3 mm.



## RAW Material

750 kg/m<sup>3</sup> density MDF or Fire Retardant MDF

## DIMENSIONS

Width	Length	Thickness
517 mm	1381 mm	8, 12, 18 mm
517 mm	2780 mm	8, 12, 18 mm
600 mm	600 mm	8, 12, 18 mm
600 mm	1200 mm	8, 12, 18 mm
1040 mm	2780 mm	8, 12, 18 mm
197 mm	2400 mm	8, 12, 18 mm
293 mm	2400 mm	8, 12, 18 mm

It is possible to produce raw materials in desired dimensions as possible.

FREKANS (HZ)	100	125	160	200	250	315	400	500	630	800	1000	1250	1600	2000	2500	3150	4000	5000	
SES YUTUM DEĞERLERİ	Tasyinsüz	0,35	0,51	0,60	0,64	0,77	0,81	0,84	0,82	0,73	0,69	0,71	0,72	0,72	0,75	0,77	0,80	0,83	
	Tasyınlı	0,54	0,62	0,62	0,67	0,74	0,78	0,82	0,83	0,82	0,79	0,82	0,78	0,76	0,77	0,77	0,78	0,77	0,84

## Edge Details

Tongue and Groove, Clips System, Biscuit, Omega Profile

## Fire Resistance Class: B s2 d0

### Surface

Natural Veneer, Engineered Veneer, Laminated

### Front Side

-128.000 holes/m<sup>2</sup>  
-Distance Between Holes: 4x4 mm  
-Hole Diameter: 1 mm

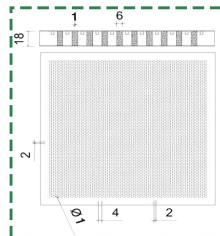
### Back Side

-ESK104 or ESK105  
-Covered with 0,2 mm acoustic fabric.

### Back Side Details

-16.000/8.000 holes/m<sup>2</sup>  
-Distance Between Holes: 8x8 or 16x8 mm  
-Hole Diameter: 4,6 mm

## Board Side: 2100 mm x 2800 mm or 1830 mm x 3660 mm



-The distance between the holes may vary different. As standard, the center-to-center 4x4 mm staggered row is between the holes.  
-According to the distance between the holes, it is possible to have between 32,000-300,000 holes per square meter.  
-Aesthetic and easy to use.

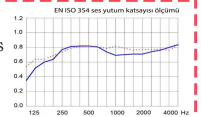
## Acoustic Features

It should be used with 5 cm thick, 50kg/m<sup>3</sup> density glass wool or rock wool board.

### NRC

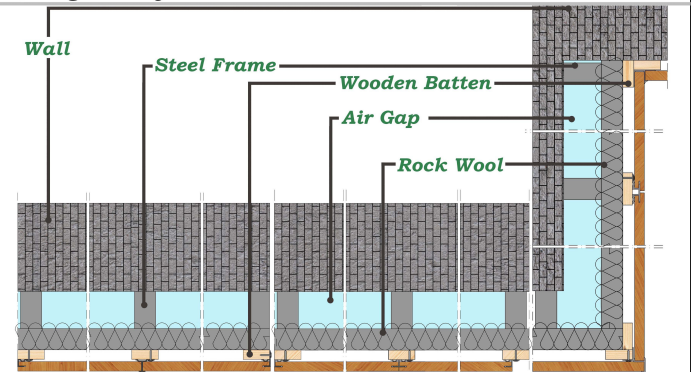
With Rock Wool: 0,80

Without Rock Wool: 0,75



## Installation (Wall Panel)

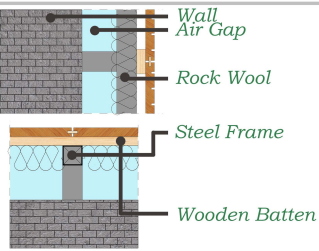
### Omega Profile



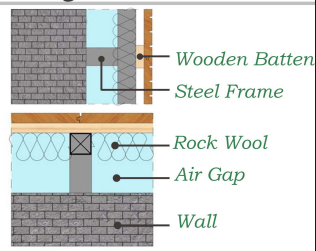
Omega profile can be used to install panels on the wall. Five different options are available. It is also possible to use this system in the installation of ceiling panels.



### Biscuit



### Tongue & Groove



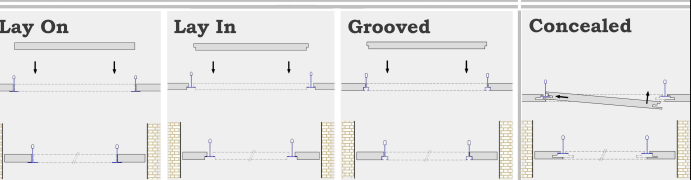
## Installation (Ceiling)

For our ceiling panels, we have two different carrier systems such as classic and modern.

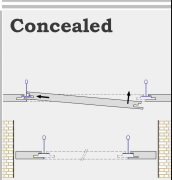
### Corners



### Classic



### Modern



## Approximate Weight

13-14 kg/m<sup>2</sup>

## NRC

0,75- 0,80

## Ceiling Application

Panel can be used with T bars such as T24, T15, T24 concealed or with tongue and groove.

