

MicroESK501 Acoustic Wooden Panel

Technical Data Sheet

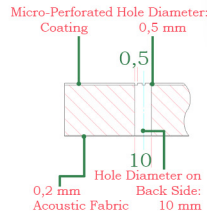
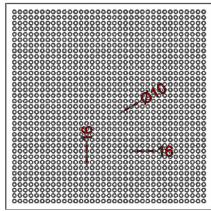
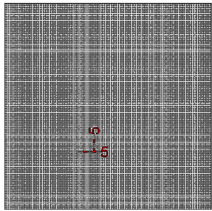
MicroESK panels feature perforations that are only noticeable upon close inspection. They provide high sound absorption performance across a wide frequency range.

When enclosed spaces are covered with MicroESK panels, a high level of acoustic control is achieved. This helps to significantly reduce and absorb disturbing noises generated by machinery and mechanical equipment within the space.

Available perforation diameters are 0.5 mm, 1 mm, 1.5 mm, 2 mm, and 3 mm.

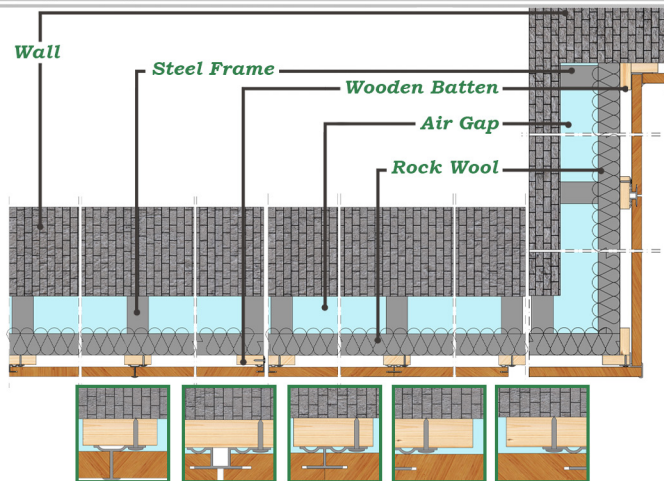
Core Material

750 kg/m³ density MDF or fire-retardant MDF



Installation Detail (Wall)

Omega Profile



The Omega profile is suitable for mounting wall panels and is offered in five different profile variants. This system can also be utilized for ceiling panel installations.

Biscuit

Tongue & Groove



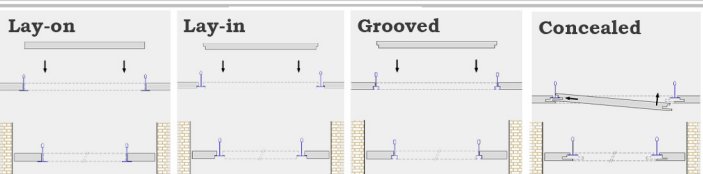
Installation Detail (Ceiling)

Two different support systems are used for our ceiling panels: classic and modern.



Classic

Modern

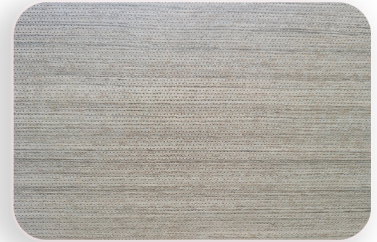


Edge Details

Tongue & Groove, Clip System, Biscuit, Omega Profile

Surface Options

Natural Veneer, Engineered Veneer, Laminate Finish, MDFLAM, Lacquer Paint



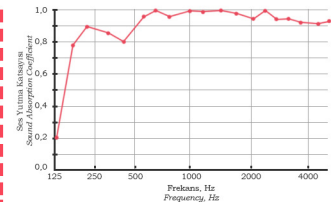
DIMENSIONS

Width	Length	Thickness
517 mm	1381 mm	8, 12, 18 mm
133 mm	2780 mm	8, 10, 18 mm
293 mm	2780 mm	8, 10, 18 mm
517 mm	2780 mm	8, 10, 18 mm
1029 mm	2780 mm	8, 10, 18 mm
581 mm	1180 mm	8, 10, 18 mm

Production in custom sizes is possible within the dimensional limitations of the core materials.

Acoustic Performance

For optimal acoustic performance, the panel should be backed with 50 kg/m³ density glass wool or stone wool, 50 mm thick.



Euro NRC
A 0,92

- The spacing between perforations is 5 × 5 mm (center-to-center) and arranged in straight rows.
- The panels offer an aesthetic appearance and ease of use.
- Upon request, fire-resistant MDF panels classified as B-s2,d0 are supplied to ensure fire safety performance.
- Panels can be finished in five different options: natural veneer, artificial veneer, laminate coating, MDFLAM, and lacquer paint.
- For natural veneer panels, a registered fire-retardant varnish can be applied upon request.
- All boards have been tested and certified in accordance with Euroclass EN 13501-1 standards.

Back Surface

Perforation Density: 4,000 holes/m²

Center-to-Center Hole Spacing: 16x16 mm

Hole Diameter: 10 mm

Fire Resistance Class

B s2 d0

Ceiling Carrier System Components

The panels can be supported by T-profiles including T24, T15, and T24 Concealed Carrier profiles, and are also compatible with tongue-and-groove joint systems.

